

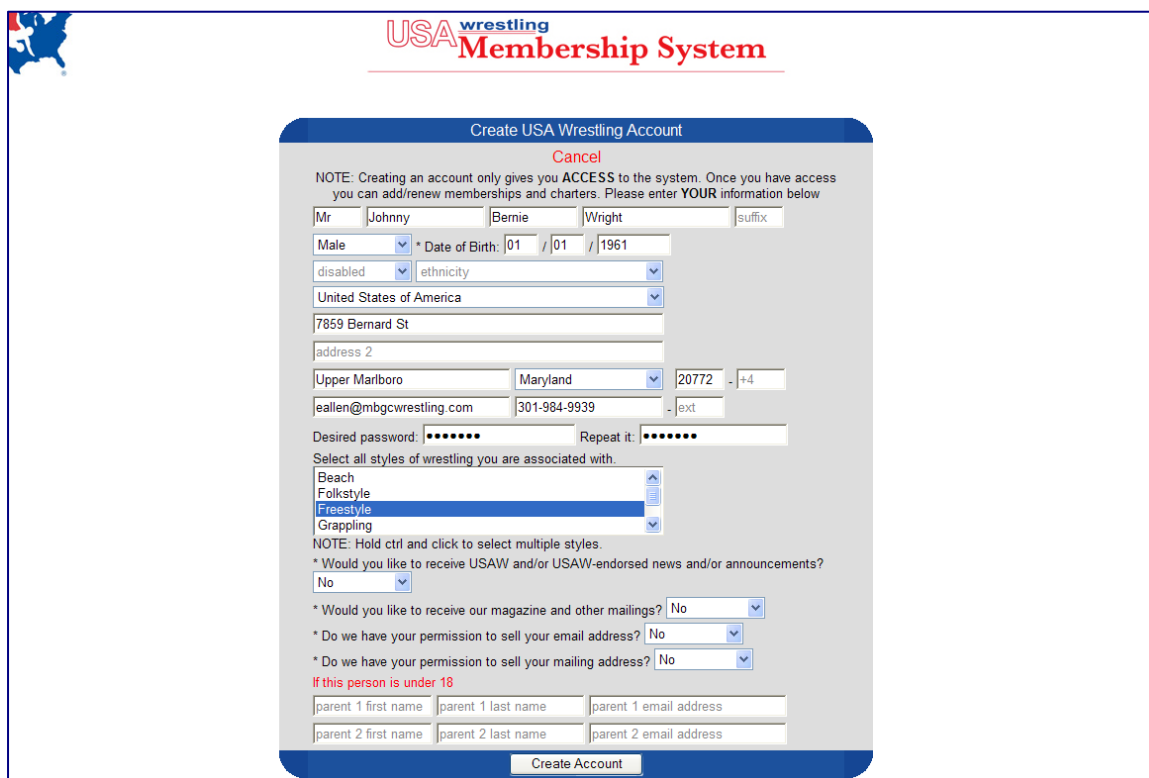
Instructions for New Membership

Open a web browser (i.e. Internet Explorer / Firefox / Google Chrome, etc.)
Go to <http://www.usawmembership.com/>
You will see the following screen,



Click on **“Click here to create an account if you don’t already have one”**

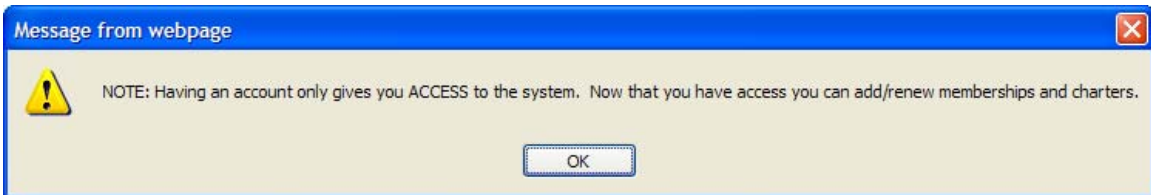
Fill out the form. Under the select *all styles of wrestling you are associated with* section, select **Folkstyle** and **Freestyle**, and then click **create Account** (See Screenshot below)



You will receive a **USAW ID** number, then click, **“Click here to continue”**



You will receive the following message, click OK



Skip to the **Instructions to Renew Membership** section in this document and follow the instructions to complete the process.

Instructions If You Have Forgotten Your Account Information

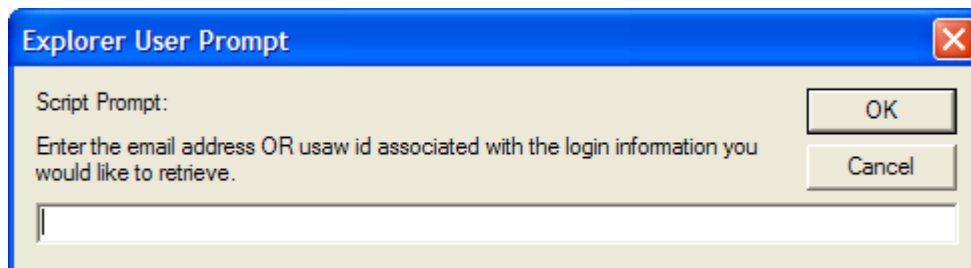
Open a web browser (i.e. Internet Explorer / Firefox / Google Chrome, etc.)
Go to <http://www.usawmembership.com/>
You will see the following screen below



Click on “Click [here](#) if you forgot your USAW ID and/or password.”

The following window will display. Enter the email address that you used when you initially setup your account and then click OK.

(NOTE: If you receive a security warning prior to seeing this box you may have to click OK to proceed)



If the system recognizes the email address you entered you should receive the message below. It may take a few minutes but you should also receive an email from info@wrestling.org, with your account and password information.



Once you receive the email follow the instructions under the **Instructions to Renew Membership** section in this document.

Instructions to Renew Membership

Open a web browser (i.e. Internet Explorer / Firefox / Google Chrome, etc.)
Go to <http://www.usawmembership.com/>
You will see the following screen.



Enter your USAW ID and password. You will see the following screen.



On the left side of screen under the Membership section click on **Renew Membership**, you will see the following screen.

In the Athlete section, under Renew Athlete select your child’s name, or click on Another Athlete

If you click on your child’s name you will see the following screen, fill out the information in the form and click on **Continue**.

(NOTE: Select **Freestyle** for the style of wrestling you are associated with. If there are other styles you are associated with you should select those as well)

You will see the following screen.

The screenshot shows the USA Wrestling Membership System interface. On the left is a navigation menu with sections: Memberships (Add New Member, Renew Membership, Print My Card(s)), Clubs (Add New Club, Renew Club, Add Club Insured), Events (Add New Event), and My Links (Profile, Positions, Member History, Payment History, People, Organizations, Events, Online Store). The main content area is titled 'Additional Athlete Data for Mr. Edward L. Allen' and includes a search bar and a 'Back' button. Below this is a date selector for 'Membership Start Date' (10 / 31 / 2010) with a 'Go' button. The 'Membership Expiration Date' is set to 08/31/2011. There are three input fields: a dropdown menu for 'Maryland Athlete Membership', a text box for 'Marlboro Boys' and Girls' Club' with 'GET' and 'CLEAR' buttons, and a text box for a grade (52.00). A large grey box contains the following text: 'Be sure to scroll down through the entire document. RELEASE AND WAIVER OF LIABILITY, ASSUMPTION OF RISK, AND INDEMNITY AGREEMENT WITH PARENTAL CONSENT ("AGREEMENT") IN CONSIDERATION of being permitted to participate in any way in any event ("Activity") at any time during the current calendar year I, for myself, my personal representatives, assigns, heirs, and next of kin: I acknowledge that I have had sufficient opportunity to review the provisions of this document and understand its purpose, meaning and intent. * Parent/Guardian Info: parent/guardian name [text box] [text box] MD [dropdown] 20772 [text box] [Back] [Continue]'

Fill out the information, verify that it is correct.

In the first box underneath Membership Expiration Date select **Maryland Athlete Membership**.

In the second box type in **Marlboro Boys and Girls Club** and click on GET. Select the name **Marlboro Boys and Girls Club (Wrestling)**

In the third box type/select your child's school grade.

Read the **RELEASE AND WAIVER OF LIABILITY, ASSUMPTION OF RISK, AND INDEMNITY AGREEMENT WITH PARENTAL CONSENT ("AGREEMENT")**

If you accept the agreement check the box next to I acknowledge and fill in the Parent/Guardian information. Click on **Continue**.

You will see the following screen. Confirm the information and click on **Pay \$35.00 with Credit Card**

USA wrestling Membership System

Profile | FAQ's | Logout

Invoice #25970801

Sales Item	Effective Date	Item Price	Proc. Fee	Total		
(delete) Maryland Athlete Membership	Edward Allen	10/31/2010	\$30.00	\$5.00	\$35.00	
Total:				\$30.00	\$5.00	\$35.00

If you would like to donate money to the **LIVING THE DREAM - Medal Fund** or make a general donation to USA Wrestling, please select the program you would like to donate to and enter the amount you would like to donate on this line:

select a program

Sales Category: Athlete Membership Count: 1

Total Count: 1

You will see the following screen, fill out the form and click **Charge my card \$35.00**

USA wrestling Membership System

Profile | FAQ's | Logout

Billing Information

Edward Allen

* credit card type

* credit card #

Cvc: ? * Exp Date: mm / / yyyy

Do not double click the button below to avoid being double charged.

You will see the following screen.

USA wrestling Membership System

Profile | FAQ's | Logout

Payment Gateway Response

Your credit card has been successfully charged \$35.00

Click [here](#) to print out a copy of your invoice.

Click [here](#) to print out the **athlete** cards associated with this invoice.

Print out a copy of the invoice for your records.

Print out a copy of the athlete card and keep it with you. This card will need to be presented to Commissioner Allen and will be required for your child to weigh-in.